



NATA LIGHTING CO.,LTD.  
www.nata.cn  
Email:info@nata.com  
Tel:+86-750-3770000 Fax:+86 750 3771111  
Address:Address:380JinOu Road,GaoXin Zone,Jiang Men City,Guangdong,China

---

## Nata

---

Client:

LumCAT: 2-2569-L

Luminaire: 92.70.412.00

Report No: 2024822-B009

Ballast type:

Test No: 2024822-C009

LampCAT: Fortimo\_SLM\_C\_1208

Lamp flux(lm): 3311.0

Number of Lamps: 1

Length(mm): 0

Phm Type: C

Voltage(V):

Current(A):

Power (W): 20.070

PF:

Width(mm): 0

Height(mm): 0

---

## Photometric Results

---

Lumens(lm): 2995.91, Efficiency(%): 90.48% , Luminous Efficacy(lm/W): 149.27

Central intensity(cd): 4757.774, Maximum intensity(cd): 4757.774

Angle of maximum intensity: C=0.0  $\gamma$ =0.0

Beam Angle(50%Imax): [C0/180]Total=48.2

[C90/270]Total=48.2

Field angle(10%Imax): [C0/180]Total=73.4

[C90/270]Total=73.4

Maximum s/h(1/2): C0\_180=0.75 C90\_270=0.75

Maximum s/h(1/4): C0\_180=0.75 C90\_270=0.75

Up flux rate of lamp(%): 0.00%

Down flux rate of lamp(%): 90.48%

Up flux rate of LUM(%): - -

Down flux rate of LUM(%): 100.00%

CIE Type : Direct lighting

Output flux ratio in  $\pi$  solid angle : 99.248%

$\gamma(^{\circ})$	Average I(cd)	Zonal F(lm)	Sum F(lm)	Eff Flux(%)	Eff Sum(%)
0.0	4757.774	0.000	0	0.00%	0.00%
1.0	4753.798	4.551	4.551	0.14%	0.15%
2.0	4743.148	13.631	18.182	0.41%	0.61%
3.0	4719.541	22.632	40.814	0.68%	1.36%
4.0	4688.752	31.493	72.306	0.95%	2.41%
5.0	4647.865	40.166	112.472	1.21%	3.75%
6.0	4587.346	48.533	161.005	1.47%	5.37%
7.0	4518.877	56.522	217.528	1.71%	7.26%
8.0	4441.019	64.124	281.652	1.94%	9.40%
9.0	4352.635	71.268	352.92	2.15%	11.78%
10.0	4246.781	77.822	430.741	2.35%	14.38%
11.0	4136.386	83.765	514.506	2.53%	17.17%
12.0	4017.923	89.138	603.644	2.69%	20.15%
13.0	3896.530	93.925	697.569	2.84%	23.28%
14.0	3767.824	98.103	795.672	2.96%	26.56%
15.0	3645.242	101.770	897.442	3.07%	29.96%
16.0	3504.145	104.759	1002.201	3.16%	33.45%
17.0	3382.272	107.240	1109.441	3.24%	37.03%
18.0	3255.445	109.442	1218.882	3.31%	40.68%
19.0	3111.490	110.772	1329.654	3.35%	44.38%
20.0	2975.754	111.413	1441.067	3.36%	48.10%
21.0	2833.112	111.542	1552.609	3.37%	51.82%
22.0	2687.560	110.940	1663.549	3.35%	55.53%
23.0	2537.829	109.643	1773.192	3.31%	59.19%
24.0	2393.722	107.821	1881.014	3.26%	62.79%
25.0	2229.846	105.130	1986.143	3.18%	66.30%
26.0	2080.121	101.737	2087.881	3.07%	69.69%
27.0	1919.438	97.850	2185.731	2.96%	72.96%
28.0	1720.699	92.161	2277.891	2.78%	76.03%
29.0	1563.629	85.927	2363.819	2.60%	78.90%
30.0	1429.286	80.808	2444.627	2.44%	81.60%
31.0	1240.830	74.305	2518.932	2.24%	84.08%
32.0	1077.728	66.424	2585.356	2.01%	86.30%
33.0	942.262	59.510	2644.866	1.80%	88.28%
34.0	809.699	53.020	2697.885	1.60%	90.05%
35.0	678.983	46.233	2744.118	1.40%	91.60%
36.0	550.152	39.136	2783.254	1.18%	92.90%
37.0	448.542	32.572	2815.826	0.98%	93.99%

$\gamma(^{\circ})$	Average I(cd)	Zonal F(lm)	Sum F(lm)	Eff Flux(%)	Eff Sum(%)
38.0	362.918	27.085	2842.911	0.82%	94.89%
39.0	281.098	21.982	2864.893	0.66%	95.63%
40.0	217.858	17.402	2882.295	0.53%	96.21%
41.0	175.835	14.019	2896.314	0.42%	96.68%
42.0	145.822	11.686	2908.001	0.35%	97.07%
43.0	107.871	9.398	2917.398	0.28%	97.38%
44.0	86.202	7.325	2924.723	0.22%	97.62%
45.0	72.490	6.099	2930.822	0.18%	97.83%
46.0	61.761	5.250	2936.072	0.16%	98.00%
47.0	53.233	4.574	2940.646	0.14%	98.16%
48.0	46.728	4.041	2944.687	0.12%	98.29%
49.0	41.163	3.609	2948.296	0.11%	98.41%
50.0	36.873	3.254	2951.55	0.10%	98.52%
51.0	33.128	2.962	2954.511	0.09%	98.62%
52.0	30.020	2.710	2957.221	0.08%	98.71%
53.0	27.451	2.500	2959.721	0.08%	98.79%
54.0	25.381	2.329	2962.05	0.07%	98.87%
55.0	23.279	2.172	2964.222	0.07%	98.94%
56.0	21.807	2.037	2966.259	0.06%	99.01%
57.0	20.302	1.925	2968.184	0.06%	99.07%
58.0	19.028	1.819	2970.003	0.05%	99.14%
59.0	17.878	1.725	2971.728	0.05%	99.19%
60.0	16.820	1.639	2973.368	0.05%	99.25%
61.0	15.848	1.559	2974.927	0.05%	99.30%
62.0	15.033	1.488	2976.415	0.04%	99.35%
63.0	14.172	1.420	2977.835	0.04%	99.40%
64.0	13.423	1.354	2979.189	0.04%	99.44%
65.0	12.792	1.297	2980.487	0.04%	99.49%
66.0	12.011	1.238	2981.724	0.04%	99.53%
67.0	11.419	1.178	2982.902	0.04%	99.57%
68.0	10.795	1.125	2984.027	0.03%	99.60%
69.0	10.131	1.068	2985.095	0.03%	99.64%
70.0	9.520	1.009	2986.104	0.03%	99.67%
71.0	8.942	0.954	2987.058	0.03%	99.70%
72.0	8.344	0.899	2987.957	0.03%	99.73%
73.0	7.792	0.844	2988.801	0.03%	99.76%
74.0	7.273	0.792	2989.593	0.02%	99.79%
75.0	6.774	0.742	2990.335	0.02%	99.81%

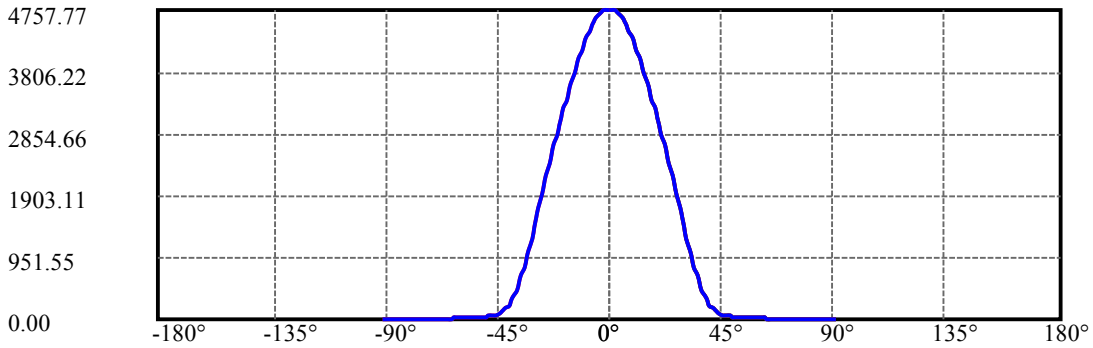
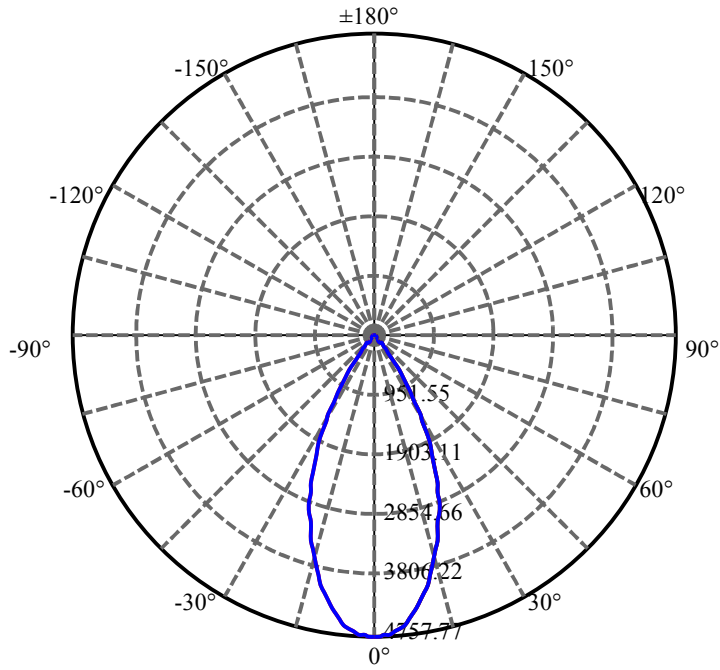
$\gamma(^{\circ})$	Average I(cd)	Zonal F(lm)	Sum F(lm)	Eff Flux(%)	Eff Sum(%)
76.0	6.202	0.689	2991.024	0.02%	99.84%
77.0	5.788	0.639	2991.663	0.02%	99.86%
78.0	5.256	0.591	2992.255	0.02%	99.88%
79.0	4.770	0.539	2992.793	0.02%	99.90%
80.0	4.297	0.489	2993.282	0.01%	99.91%
81.0	3.844	0.440	2993.722	0.01%	99.93%
82.0	3.403	0.393	2994.115	0.01%	99.94%
83.0	3.003	0.348	2994.464	0.01%	99.95%
84.0	2.608	0.306	2994.769	0.01%	99.96%
85.0	2.273	0.266	2995.036	0.01%	99.97%
86.0	1.965	0.232	2995.267	0.01%	99.98%
87.0	1.689	0.200	2995.467	0.01%	99.99%
88.0	1.419	0.170	2995.637	0.01%	99.99%
89.0	1.235	0.145	2995.783	0.00%	100.00%
90.0	1.104	0.128	2995.911	0.00%	100.00%

ZONAL LUMEN SUMMARY

Zone	Lumens	%Lamp	%Fixt
0-30	2444.63	73.83%	81.60%
0-40	2882.30	87.05%	96.21%
0-60	2973.37	89.80%	99.25%
0-90	2995.78	90.48%	100.00%
0-120	2995.78	90.48%	100.00%
0-180	2995.91	90.48%	100.00%
60-90	22.42	0.68%	0.75%
90-120	0.00	0.00%	0.00%
90-130	0.00	0.00%	0.00%
90-150	0.00	0.00%	0.00%
90-180	0.00	0.00%	0.00%
0-29.41	2396.73	72.39%	80.00%

ZONAL LUMEN SUMMARY

0-10	430.74
10-20	1010.33
20-30	1003.56
30-40	437.67
40-50	69.25
50-60	21.82
60-70	12.74
70-80	7.18
80-90	2.50
90-100	0.00
100-110	0.00
110-120	0.00
120-130	0.00
130-140	0.00
140-150	0.00
150-160	0.00
160-170	0.00
170-180	0.00

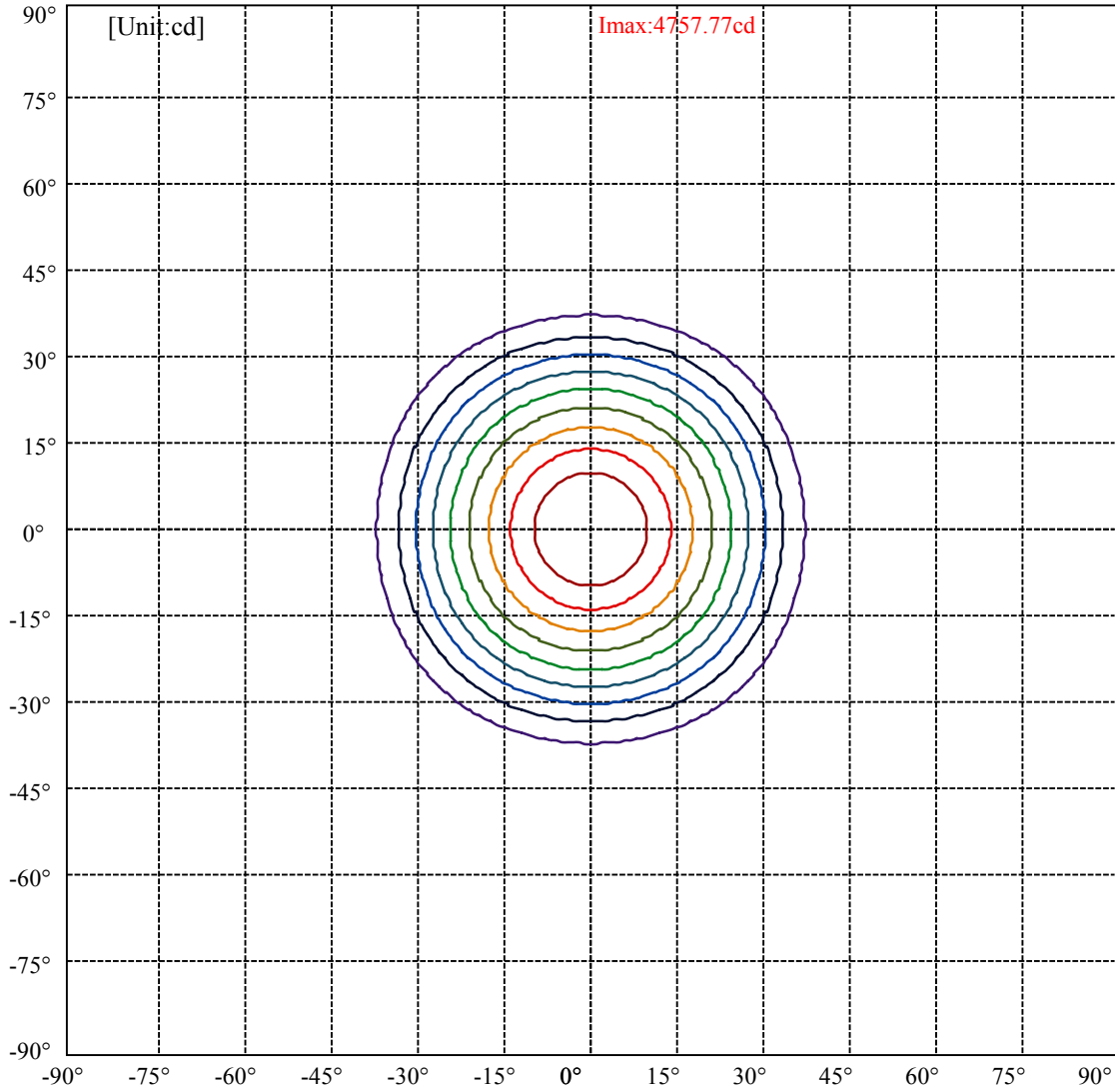


C0(Max): —————  
C0/C180: —————  
C90/C270: —————

Field angle(10%Imax):C0/180Left:36.7 Right:36.7  
:C90/270Left:36.7 Right:36.7

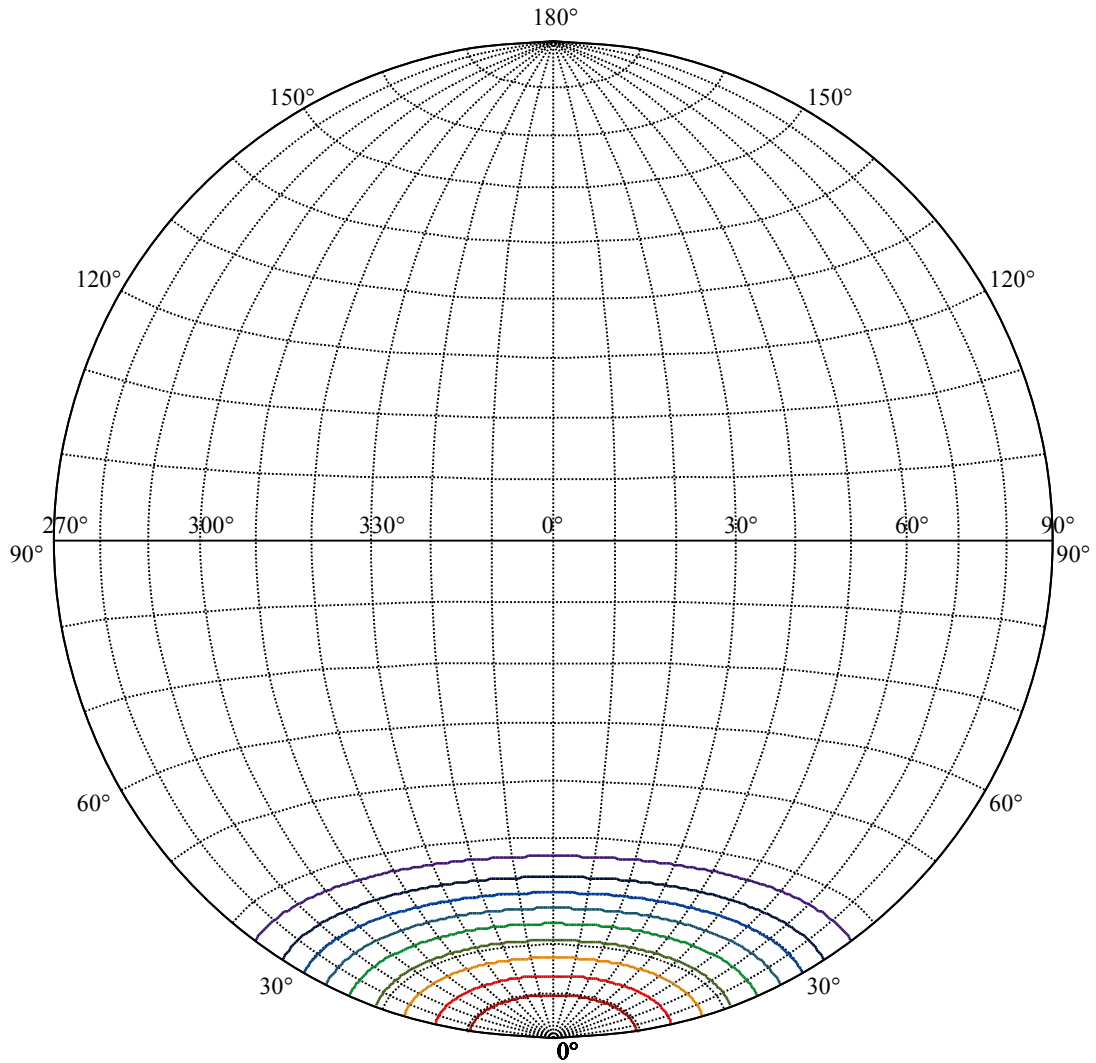
Beam Angle(50%Imax):C0/180Left:24.1 Right:24.1  
:C90/270Left:24.1 Right:24.1





(10%Imax) 475.777	—
(20%Imax) 951.555	—
(30%Imax) 1427.33	—
(40%Imax) 1903.11	—
(50%Imax) 2378.89	—
(60%Imax) 2854.66	—
(70%Imax) 3330.44	—
(80%Imax) 3806.22	—
(90%Imax) 4282	—





House

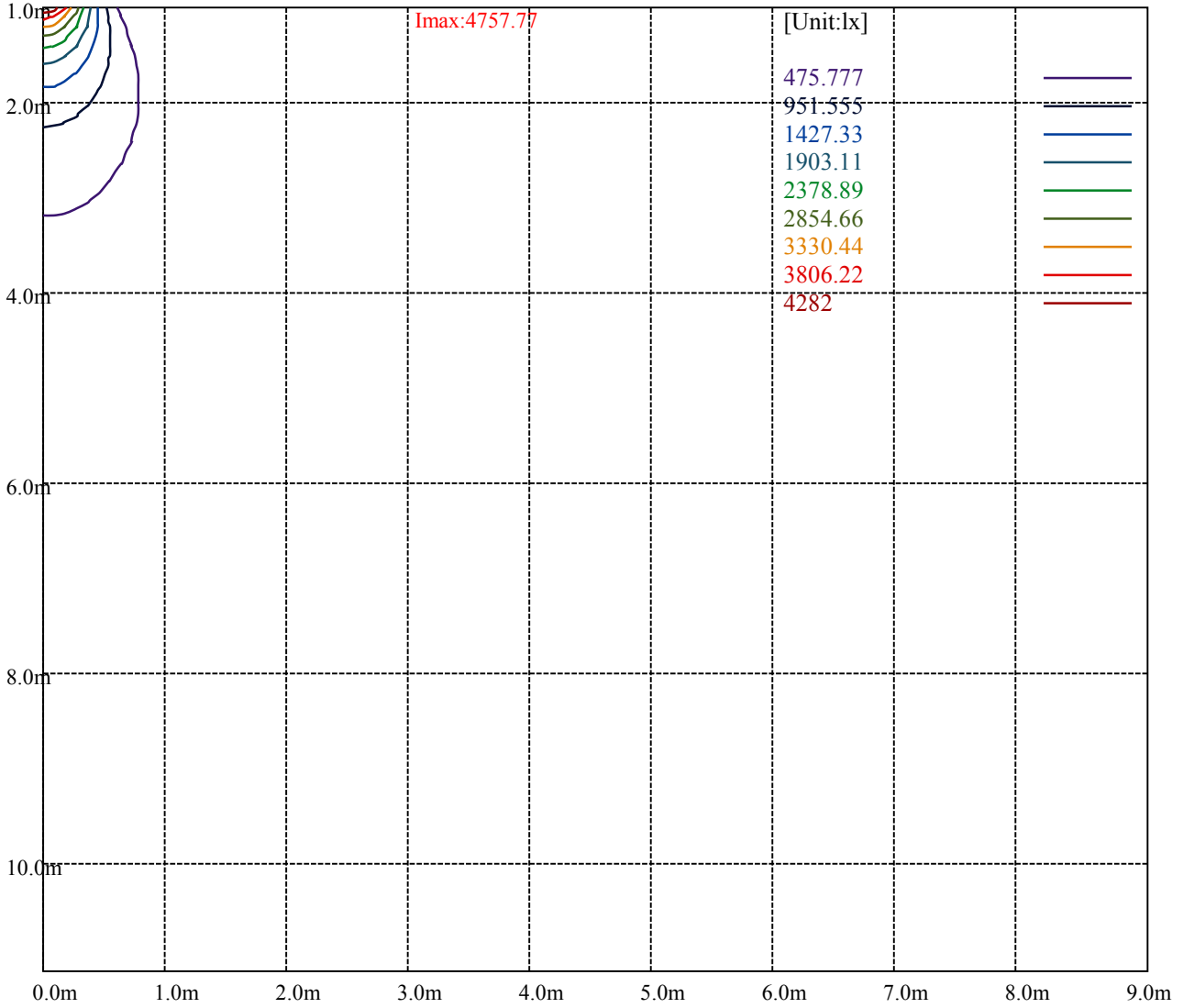
[Unit:cd]

Road

**Imax:4757.77**

(10%Imax) 475.777	—
(20%Imax) 951.555	—
(30%Imax) 1427.33	—
(40%Imax) 1903.11	—
(50%Imax) 2378.89	—
(60%Imax) 2854.66	—
(70%Imax) 3330.44	—
(80%Imax) 3806.22	—
(90%Imax) 4282	—





Luminance Table

$\gamma$	45	50	55	60	65	70	75	80	85
C0	0	0	0	0	0	0	0	0	0
C45	0	0	0	0	0	0	0	0	0
C90	0	0	0	0	0	0	0	0	0

L(Hor)(65)	L(Ver)(65)	L45(65)	L(Hor)(75)	L(Ver)(75)	L45(75)	L(Hor)(85)	L(Ver)(85)	L45(85)
0	0	0	0	0	0	0	0	0

Glare Table

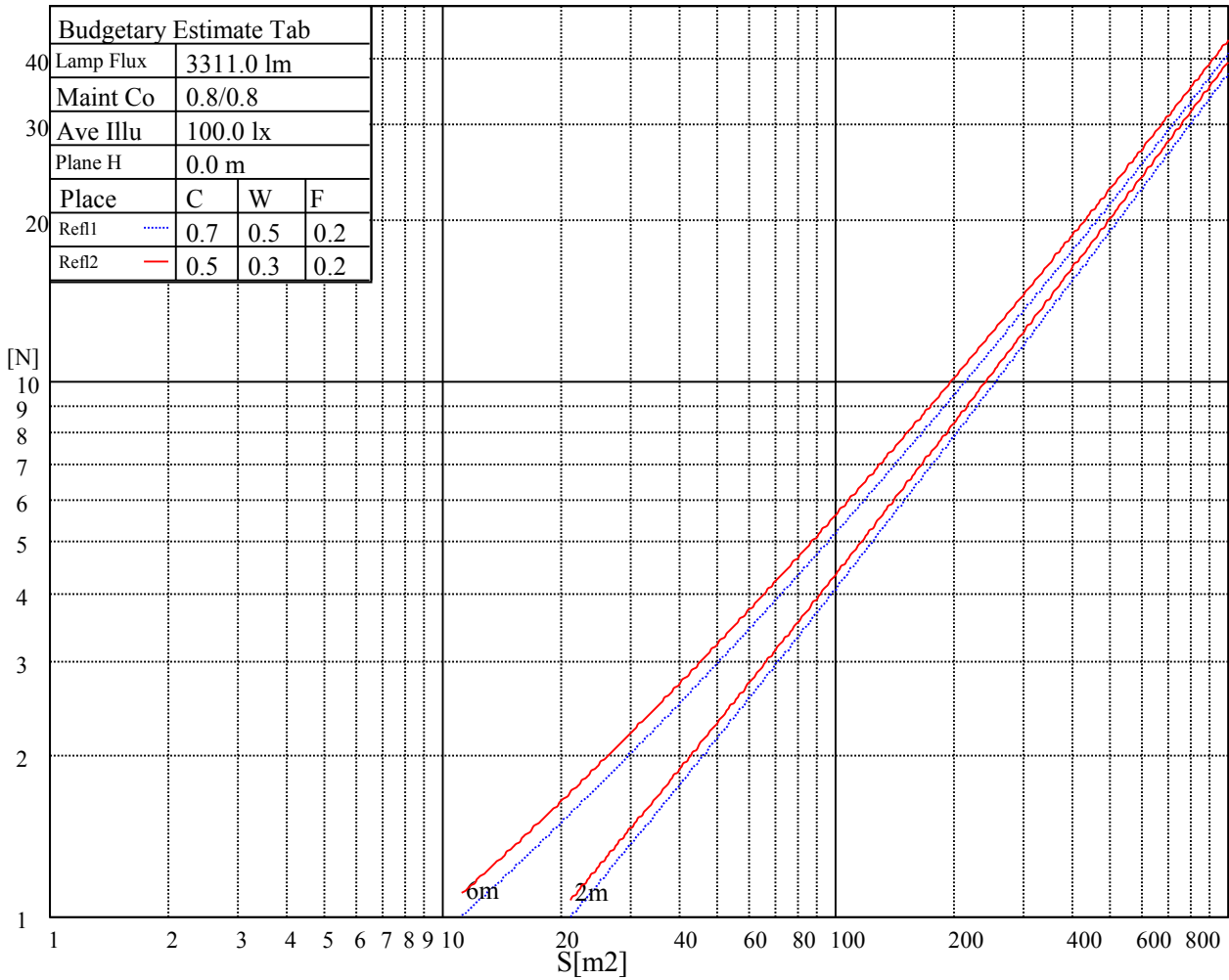
Glare	Quality	Service Values Illuminance(lx)							
1.15	A	2000	1000	500	<=300				
1.5	B		2000	1000	500	<=300			
1.85	C			2000	1000	500	<=300		
2.2	D				2000	1000	500	<=300	
2.55	E					2000	1000	500	<=300
		a	b	c	d	e	f	g	h

Luminance Limiting Curve

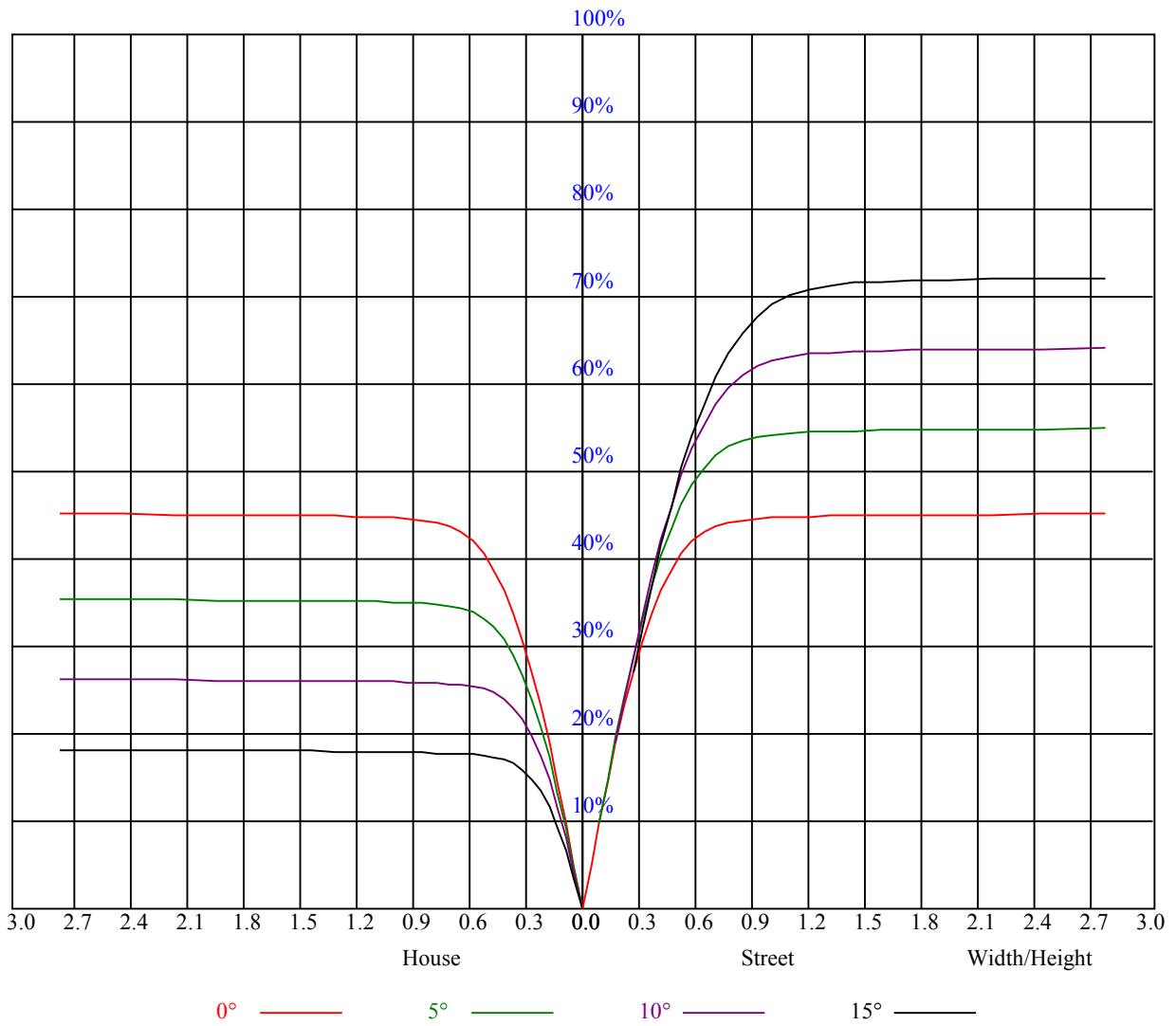


Illumination assessment according UGR											
Rf of Ceiling	70	70	50	50	30	70	70	50	50	30	
Rf of Wall	50	30	50	30	30	50	30	50	30	30	
Rf of Floor	20	20	20	20	20	20	20	20	20	20	
Room dimensions		Viewed crosswise					Viewed endwise				
X	Y										
2H	2H	非数字	非数字	非数字	非数字	非数字	非数字	非数字	非数字	非数字	
	3H	非数字	非数字	非数字	非数字	非数字	非数字	非数字	非数字	非数字	
	4H	非数字	非数字	非数字	非数字	非数字	非数字	非数字	非数字	非数字	
	6H	非数字	非数字	非数字	非数字	非数字	非数字	非数字	非数字	非数字	
	8H	非数字	非数字	非数字	非数字	非数字	非数字	非数字	非数字	非数字	
	12H	非数字	非数字	非数字	非数字	非数字	非数字	非数字	非数字	非数字	
4H	2H	非数字	非数字	非数字	非数字	非数字	非数字	非数字	非数字	非数字	
	3H	非数字	非数字	非数字	非数字	非数字	非数字	非数字	非数字	非数字	
	4H	非数字	非数字	非数字	非数字	非数字	非数字	非数字	非数字	非数字	
	6H	非数字	非数字	非数字	非数字	非数字	非数字	非数字	非数字	非数字	
	8H	非数字	非数字	非数字	非数字	非数字	非数字	非数字	非数字	非数字	
	12H	非数字	非数字	非数字	非数字	非数字	非数字	非数字	非数字	非数字	
8H	4H	非数字	非数字	非数字	非数字	非数字	非数字	非数字	非数字	非数字	
	6H	非数字	非数字	非数字	非数字	非数字	非数字	非数字	非数字	非数字	
	8H	非数字	非数字	非数字	非数字	非数字	非数字	非数字	非数字	非数字	
	12H	非数字	非数字	非数字	非数字	非数字	非数字	非数字	非数字	非数字	
12H	4H	非数字	非数字	非数字	非数字	非数字	非数字	非数字	非数字	非数字	
	6H	非数字	非数字	非数字	非数字	非数字	非数字	非数字	非数字	非数字	
	8H	非数字	非数字	非数字	非数字	非数字	非数字	非数字	非数字	非数字	
Variation with the observer position at spacings:											
S = 1.0H		非数字/非数字					非数字/非数字				
S = 1.5H		非数字/非数字					非数字/非数字				
S = 2.0H		非数字/非数字					非数字/非数字				
Standard tables:		BK0					BK0				
Uncorrected UGR		负无穷大					负无穷大				

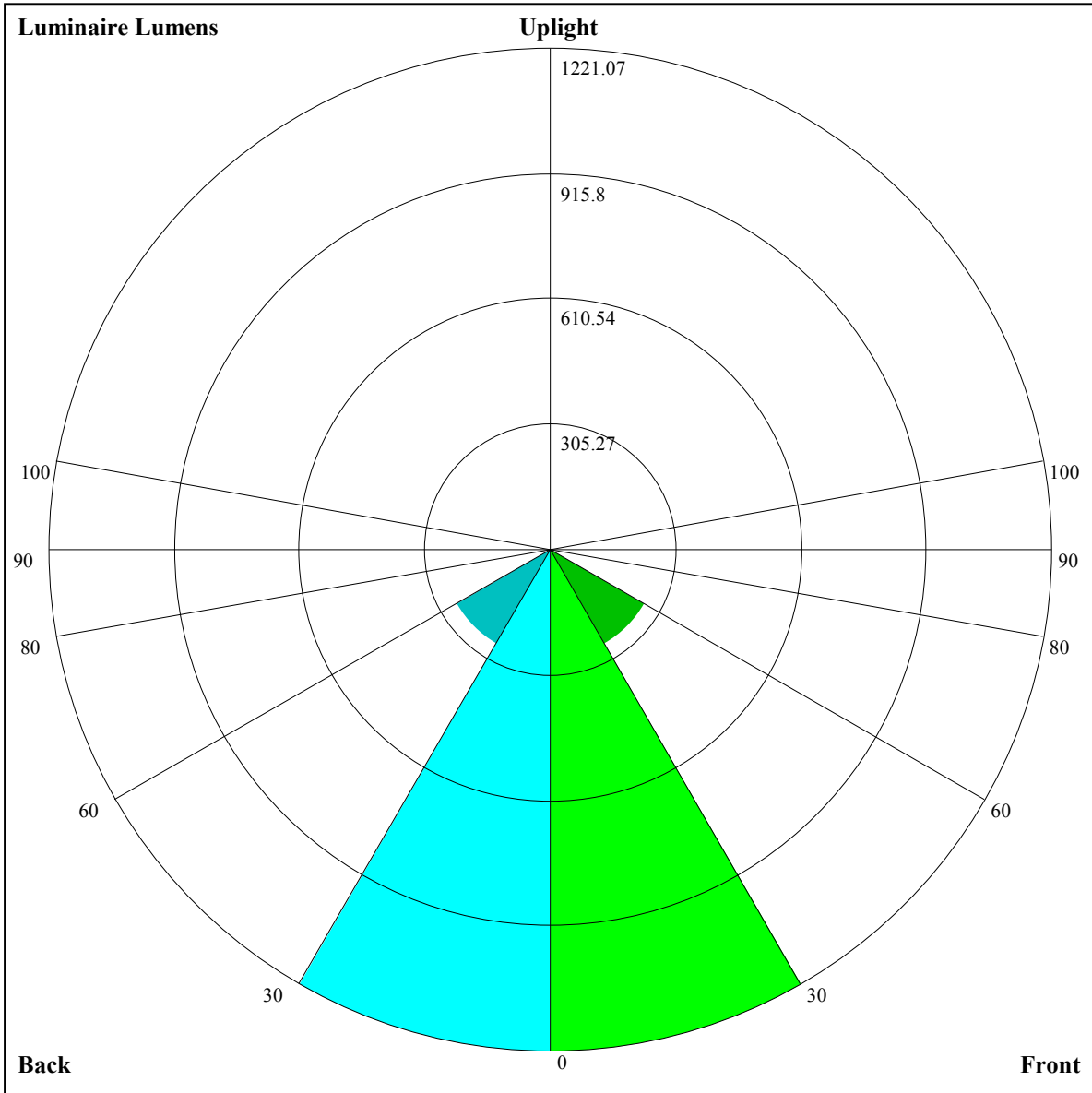
UGR calculation is based on CIE Publ. 117 ,S/H = 0.25



RHOCC	80			70			50			30			10			0
RHOW	50	30	10	50	30	10	50	30	10	50	30	10	50	30	10	0
RCR	COEFFICIENTS OF UTILIZATION RHOFC=20 CU															
0	1.08	1.08	1.08	1.05	1.05	1.05	1.01	1.01	1.01	0.96	0.96	0.96	0.92	0.92	0.92	0.90
1	1.01	0.99	0.97	0.99	0.97	0.95	0.95	0.94	0.92	0.92	0.91	0.89	0.89	0.88	0.87	0.85
2	0.94	0.91	0.88	0.93	0.90	0.87	0.90	0.87	0.85	0.87	0.85	0.83	0.85	0.83	0.82	0.80
3	0.89	0.84	0.81	0.87	0.84	0.80	0.85	0.82	0.79	0.83	0.80	0.78	0.81	0.79	0.77	0.75
4	0.83	0.79	0.75	0.82	0.78	0.75	0.81	0.77	0.74	0.79	0.76	0.73	0.77	0.75	0.72	0.71
5	0.79	0.74	0.70	0.78	0.73	0.70	0.76	0.72	0.69	0.75	0.72	0.69	0.74	0.71	0.68	0.67
6	0.75	0.70	0.66	0.74	0.69	0.66	0.73	0.68	0.65	0.71	0.68	0.65	0.70	0.67	0.65	0.63
7	0.71	0.66	0.62	0.70	0.65	0.62	0.69	0.65	0.62	0.68	0.64	0.61	0.67	0.64	0.61	0.60
8	0.67	0.62	0.59	0.67	0.62	0.59	0.66	0.61	0.58	0.65	0.61	0.58	0.64	0.61	0.58	0.57
9	0.64	0.59	0.56	0.63	0.59	0.56	0.63	0.58	0.55	0.62	0.58	0.55	0.61	0.58	0.55	0.54
10	0.61	0.56	0.53	0.61	0.56	0.53	0.60	0.56	0.53	0.59	0.55	0.53	0.59	0.55	0.52	0.51







Luminaire Lumens:

FL=1221.07,FM=267.41,FH=9.98,FVH=1.32

BL=1221.07,BM=267.41,BH=9.98,BVH=1.32

UL=0,UH=0

BUG Rating:B3-U0-G0

Intensity data(cd)

C/γ(°)	0.0	1.0	2.0	3.0	4.0	5.0	6.0	7.0	8.0
0.0	4757.77	4753.80	4743.15	4719.54	4688.75	4647.87	4587.35	4518.88	4441.02
45.0	4757.77	4753.80	4743.15	4719.54	4688.75	4647.87	4587.35	4518.88	4441.02
90.0	4757.77	4753.80	4743.15	4719.54	4688.75	4647.87	4587.35	4518.88	4441.02
135.0	4757.77	4753.80	4743.15	4719.54	4688.75	4647.87	4587.35	4518.88	4441.02
180.0	4757.77	4753.80	4743.15	4719.54	4688.75	4647.87	4587.35	4518.88	4441.02
225.0	4757.77	4753.80	4743.15	4719.54	4688.75	4647.87	4587.35	4518.88	4441.02
270.0	4757.77	4753.80	4743.15	4719.54	4688.75	4647.87	4587.35	4518.88	4441.02
315.0	4757.77	4753.80	4743.15	4719.54	4688.75	4647.87	4587.35	4518.88	4441.02
360.0	4757.77	4753.80	4743.15	4719.54	4688.75	4647.87	4587.35	4518.88	4441.02
C/γ(°)	9.0	10.0	11.0	12.0	13.0	14.0	15.0	16.0	17.0
0.0	4352.64	4246.78	4136.39	4017.92	3896.53	3767.82	3645.24	3504.15	3382.27
45.0	4352.64	4246.78	4136.39	4017.92	3896.53	3767.82	3645.24	3504.15	3382.27
90.0	4352.64	4246.78	4136.39	4017.92	3896.53	3767.82	3645.24	3504.15	3382.27
135.0	4352.64	4246.78	4136.39	4017.92	3896.53	3767.82	3645.24	3504.15	3382.27
180.0	4352.64	4246.78	4136.39	4017.92	3896.53	3767.82	3645.24	3504.15	3382.27
225.0	4352.64	4246.78	4136.39	4017.92	3896.53	3767.82	3645.24	3504.15	3382.27
270.0	4352.64	4246.78	4136.39	4017.92	3896.53	3767.82	3645.24	3504.15	3382.27
315.0	4352.64	4246.78	4136.39	4017.92	3896.53	3767.82	3645.24	3504.15	3382.27
360.0	4352.64	4246.78	4136.39	4017.92	3896.53	3767.82	3645.24	3504.15	3382.27
C/γ(°)	18.0	19.0	20.0	21.0	22.0	23.0	24.0	25.0	26.0
0.0	3255.45	3111.49	2975.75	2833.11	2687.56	2537.83	2393.72	2229.85	2080.12
45.0	3255.45	3111.49	2975.75	2833.11	2687.56	2537.83	2393.72	2229.85	2080.12
90.0	3255.45	3111.49	2975.75	2833.11	2687.56	2537.83	2393.72	2229.85	2080.12
135.0	3255.45	3111.49	2975.75	2833.11	2687.56	2537.83	2393.72	2229.85	2080.12
180.0	3255.45	3111.49	2975.75	2833.11	2687.56	2537.83	2393.72	2229.85	2080.12
225.0	3255.45	3111.49	2975.75	2833.11	2687.56	2537.83	2393.72	2229.85	2080.12
270.0	3255.45	3111.49	2975.75	2833.11	2687.56	2537.83	2393.72	2229.85	2080.12
315.0	3255.45	3111.49	2975.75	2833.11	2687.56	2537.83	2393.72	2229.85	2080.12
360.0	3255.45	3111.49	2975.75	2833.11	2687.56	2537.83	2393.72	2229.85	2080.12
C/γ(°)	27.0	28.0	29.0	30.0	31.0	32.0	33.0	34.0	35.0
0.0	1919.44	1720.70	1563.63	1429.29	1240.83	1077.73	942.26	809.70	678.98
45.0	1919.44	1720.70	1563.63	1429.29	1240.83	1077.73	942.26	809.70	678.98
90.0	1919.44	1720.70	1563.63	1429.29	1240.83	1077.73	942.26	809.70	678.98
135.0	1919.44	1720.70	1563.63	1429.29	1240.83	1077.73	942.26	809.70	678.98
180.0	1919.44	1720.70	1563.63	1429.29	1240.83	1077.73	942.26	809.70	678.98
225.0	1919.44	1720.70	1563.63	1429.29	1240.83	1077.73	942.26	809.70	678.98
270.0	1919.44	1720.70	1563.63	1429.29	1240.83	1077.73	942.26	809.70	678.98
315.0	1919.44	1720.70	1563.63	1429.29	1240.83	1077.73	942.26	809.70	678.98
360.0	1919.44	1720.70	1563.63	1429.29	1240.83	1077.73	942.26	809.70	678.98
C/γ(°)	36.0	37.0	38.0	39.0	40.0	41.0	42.0	43.0	44.0
0.0	550.15	448.54	362.92	281.10	217.86	175.84	145.82	107.87	86.20
45.0	550.15	448.54	362.92	281.10	217.86	175.84	145.82	107.87	86.20
90.0	550.15	448.54	362.92	281.10	217.86	175.84	145.82	107.87	86.20
135.0	550.15	448.54	362.92	281.10	217.86	175.84	145.82	107.87	86.20
180.0	550.15	448.54	362.92	281.10	217.86	175.84	145.82	107.87	86.20
225.0	550.15	448.54	362.92	281.10	217.86	175.84	145.82	107.87	86.20
270.0	550.15	448.54	362.92	281.10	217.86	175.84	145.82	107.87	86.20
315.0	550.15	448.54	362.92	281.10	217.86	175.84	145.82	107.87	86.20
360.0	550.15	448.54	362.92	281.10	217.86	175.84	145.82	107.87	86.20

Intensity data(cd)

C/γ(°)	45.0	46.0	47.0	48.0	49.0	50.0	51.0	52.0	53.0
0.0	72.49	61.76	53.23	46.73	41.16	36.87	33.13	30.02	27.45
45.0	72.49	61.76	53.23	46.73	41.16	36.87	33.13	30.02	27.45
90.0	72.49	61.76	53.23	46.73	41.16	36.87	33.13	30.02	27.45
135.0	72.49	61.76	53.23	46.73	41.16	36.87	33.13	30.02	27.45
180.0	72.49	61.76	53.23	46.73	41.16	36.87	33.13	30.02	27.45
225.0	72.49	61.76	53.23	46.73	41.16	36.87	33.13	30.02	27.45
270.0	72.49	61.76	53.23	46.73	41.16	36.87	33.13	30.02	27.45
315.0	72.49	61.76	53.23	46.73	41.16	36.87	33.13	30.02	27.45
360.0	72.49	61.76	53.23	46.73	41.16	36.87	33.13	30.02	27.45
C/γ(°)	54.0	55.0	56.0	57.0	58.0	59.0	60.0	61.0	62.0
0.0	25.38	23.28	21.81	20.30	19.03	17.88	16.82	15.85	15.03
45.0	25.38	23.28	21.81	20.30	19.03	17.88	16.82	15.85	15.03
90.0	25.38	23.28	21.81	20.30	19.03	17.88	16.82	15.85	15.03
135.0	25.38	23.28	21.81	20.30	19.03	17.88	16.82	15.85	15.03
180.0	25.38	23.28	21.81	20.30	19.03	17.88	16.82	15.85	15.03
225.0	25.38	23.28	21.81	20.30	19.03	17.88	16.82	15.85	15.03
270.0	25.38	23.28	21.81	20.30	19.03	17.88	16.82	15.85	15.03
315.0	25.38	23.28	21.81	20.30	19.03	17.88	16.82	15.85	15.03
360.0	25.38	23.28	21.81	20.30	19.03	17.88	16.82	15.85	15.03
C/γ(°)	63.0	64.0	65.0	66.0	67.0	68.0	69.0	70.0	71.0
0.0	14.17	13.42	12.79	12.01	11.42	10.80	10.13	9.52	8.94
45.0	14.17	13.42	12.79	12.01	11.42	10.80	10.13	9.52	8.94
90.0	14.17	13.42	12.79	12.01	11.42	10.80	10.13	9.52	8.94
135.0	14.17	13.42	12.79	12.01	11.42	10.80	10.13	9.52	8.94
180.0	14.17	13.42	12.79	12.01	11.42	10.80	10.13	9.52	8.94
225.0	14.17	13.42	12.79	12.01	11.42	10.80	10.13	9.52	8.94
270.0	14.17	13.42	12.79	12.01	11.42	10.80	10.13	9.52	8.94
315.0	14.17	13.42	12.79	12.01	11.42	10.80	10.13	9.52	8.94
360.0	14.17	13.42	12.79	12.01	11.42	10.80	10.13	9.52	8.94
C/γ(°)	72.0	73.0	74.0	75.0	76.0	77.0	78.0	79.0	80.0
0.0	8.34	7.79	7.27	6.77	6.20	5.79	5.26	4.77	4.30
45.0	8.34	7.79	7.27	6.77	6.20	5.79	5.26	4.77	4.30
90.0	8.34	7.79	7.27	6.77	6.20	5.79	5.26	4.77	4.30
135.0	8.34	7.79	7.27	6.77	6.20	5.79	5.26	4.77	4.30
180.0	8.34	7.79	7.27	6.77	6.20	5.79	5.26	4.77	4.30
225.0	8.34	7.79	7.27	6.77	6.20	5.79	5.26	4.77	4.30
270.0	8.34	7.79	7.27	6.77	6.20	5.79	5.26	4.77	4.30
315.0	8.34	7.79	7.27	6.77	6.20	5.79	5.26	4.77	4.30
360.0	8.34	7.79	7.27	6.77	6.20	5.79	5.26	4.77	4.30
C/γ(°)	81.0	82.0	83.0	84.0	85.0	86.0	87.0	88.0	89.0
0.0	3.84	3.40	3.00	2.61	2.27	1.97	1.69	1.42	1.24
45.0	3.84	3.40	3.00	2.61	2.27	1.97	1.69	1.42	1.24
90.0	3.84	3.40	3.00	2.61	2.27	1.97	1.69	1.42	1.24
135.0	3.84	3.40	3.00	2.61	2.27	1.97	1.69	1.42	1.24
180.0	3.84	3.40	3.00	2.61	2.27	1.97	1.69	1.42	1.24
225.0	3.84	3.40	3.00	2.61	2.27	1.97	1.69	1.42	1.24
270.0	3.84	3.40	3.00	2.61	2.27	1.97	1.69	1.42	1.24
315.0	3.84	3.40	3.00	2.61	2.27	1.97	1.69	1.42	1.24
360.0	3.84	3.40	3.00	2.61	2.27	1.97	1.69	1.42	1.24

Intensity data(cd)

C/ $\gamma$ (°)	90.0
0.0	1.10
45.0	1.10
90.0	1.10
135.0	1.10
180.0	1.10
225.0	1.10
270.0	1.10
315.0	1.10
360.0	1.10